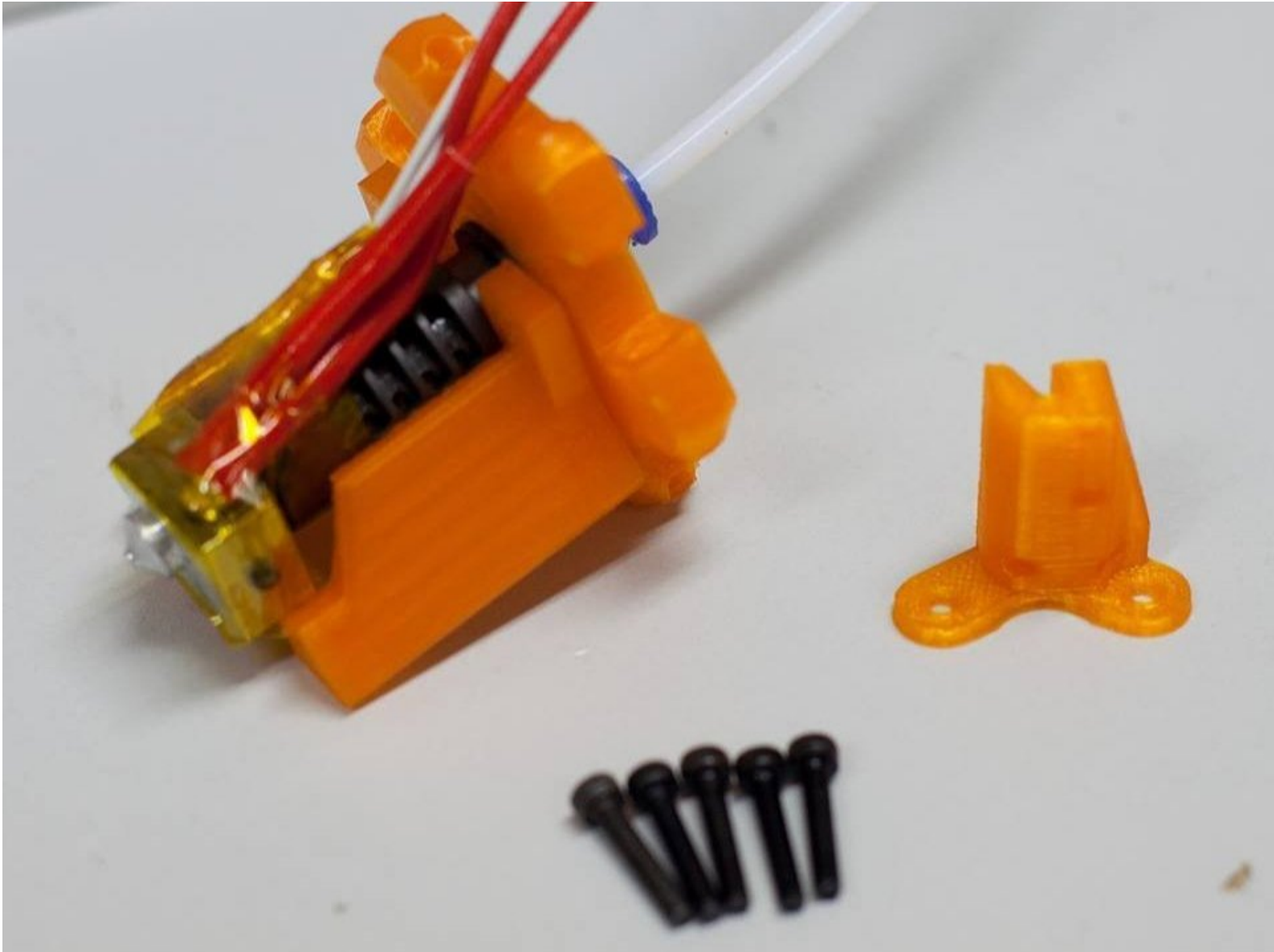


HKBay.com

H - Effector Assembly

Written By: HKBay



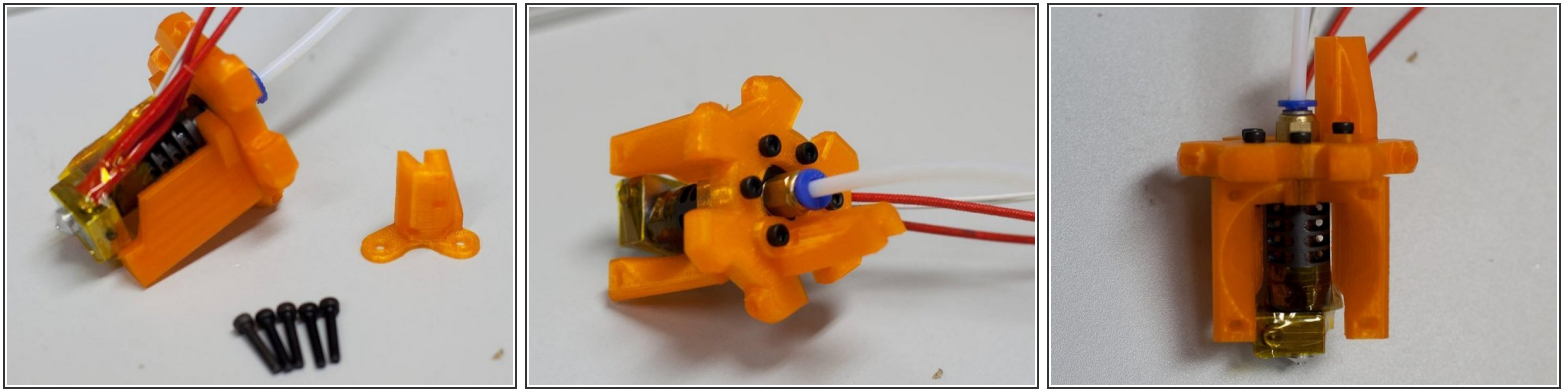
**TOOLS:**

- [Hex key; ball ended, long arm, 2.5mm](#) (1)
- [Needle-nose pliers, small](#) (1)

**PARTS:**

- [effector plate](#) (1)
- [fan assembly with hot-end](#) (1)
- [Z-probe assembly](#) (1)
- [M3x16 screws](#) (5)
- [standard nut](#) (1)

Step 1 — H - Effector Assembly



- Add the fan assembly with J-Head to the effector plate by guiding the PTFE Bowden tubing through the center hole in the effector plate and the 4 cables are routed on the side of the effector plate.

⚠ The fan should be positioned below one of the pairs of carbon rod connectors with conical ends facing away from each other (see picture)!

- Secure the fan assembly with 3 screws on left (looking at the fan); keep the three holes on the left empty.
- Remove hex key from Z-Probe and add the Z-Probe holder to the remaining holes on left of fan with two screws. The hex key will go through the middle hole, so keep it empty! The right screw needs to be secured with a standard nut.

⚠ Make sure the hot-end sits all the way inside the fan bracket, otherwise the holes will not line up properly.

- ① Make sure all cable come off neatly together on the side of effector.